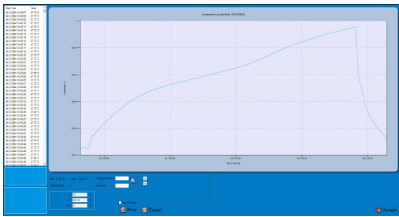
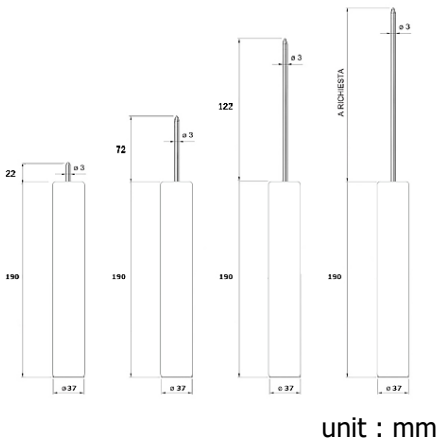


HIGH TEMPERATURE DATA LOGGER MicroW XL HP1



Drawing



Ordering code

MicroW XL HP1

- 50** : Probe length 22 mm
- 100** : Probe length 72 mm
- 150** : Probe length 122 mm
- xx** : Probe length 22...147 mm

www.omi.co.th

Omega Measuring Instrument Co., Ltd.

Tel : 02-105-4676
Fax : 02-903-0080 ext. 6867
Email : info@omi.co.th
Line : @omith

Features

- Prevent up to 250°C maximum 17 minutes
- With different lengths rigid probe for penetration
- Completely food grade and waterproof
- All software calculate lethality value (F0, PU, A0 ecc.)
- long live battery and user replaceable battery (software shows battery status)
- Very easy to deploy in any type of package
- Accredia (NIST equivalent) traceable calibration certificate included
- Available extended calibration from -40°C to 250°C (order extra calibration points; in case of wide calibration range the accuracy might be worse. Request the possible calibration ranges in advance)
- Application for Sterilisation, Pasteurisation, Food and Beverage, Pharmaceutical, Healthcare, Medical, Cosmetics, Laboratories, Validation

Technical data

Temperature range : -40...+250°C

-40...+140°C (permanently)

+141...+250°C (max. 17 minutes)

Accuracy : ± 0.1°C (valid in the calibration range)

Accuracy (Option) : ± 0.05°C (high accuracy calibration)

Resolution : 0.01 °C

Memory capacity : 20,224 reading

Battery type : high temperature Lithium battery

Battery life (@different interval) : more than 5 years @ 30 seconds or 6 months @ 1 second (17,000,000 acquisitions @ 1 second step continuously (calculated time @25°C)). Storage or operation above +50°C significantly reduces battery life.

Interval : 1s...24hr

Material : Teflon (body), Stainless steel AISI316L, PEEK (logger)

Operate system : Windows 10, 11 (32/64 bit)

Exporting : PDF, Excel

Dimension : Φ37 x 190h mm

Weight : 478g

Protection type : IP68

Application



Autoclave



Sterilization process



pasteurization process



Oven/Retort

**Note: Furthermore, these process that are shown, please do not hesitate to contact us for consulting*

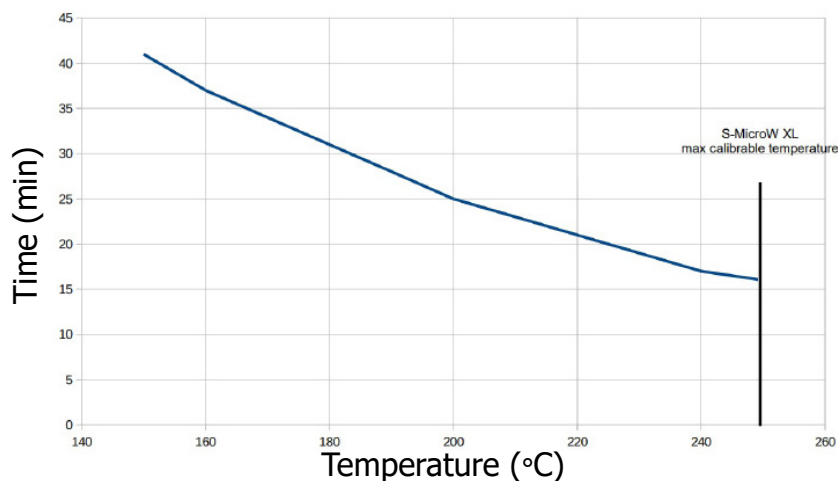
HIGH TEMPERATURE DATA LOGGER MicroW XL HP1



Temperature (°C)	Time (min)
150	42
160	37
170	34
180	31
190	27
200	25
210	23
220	21
230	19
240	18
250	17

Listed specifications can be used to determine maximum allowable times for the S-MicroW XL HP1 at different temperature range. The data logger must be at ambient temperature (approximately 25 °C) before being placed in extreme temperature environment. After using it, the data logger should be placed in a water bath (approximately 25 °C) for at least 15 minutes to allow it to cool. Failing to do this may allow heat trapped to potentially unsafe levels.

The relative of temperature and time's data logger



www.omi.co.th

Omega Measuring Instrument Co., Ltd.

Tel : 02-105-4676

Fax : 02-903-0080 ext. 6867

Email : info@omi.co.th

Line : @omith

HIGH TEMPERATURE DATA LOGGER MicroW XL HP1

Accessories

These are necessary equipments that using with products and increase efficiency.

DiskInterface HS : is the connection bay used for downloading data and programming all models of high temperature data loggers



Universal Multibay : is the multiple connection bay used for downloading data and programming all models of high temperature data loggers. It allows to connect up to 5 data loggers of each supported model to be programmed and downloaded at the same time.



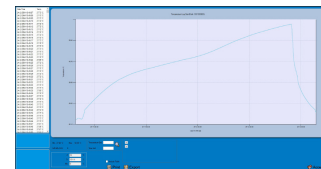
TS17MU : use to open data loggers for battery replacement.
*Note : For all of **sterilDisk** model, need 2 items for opening*
*For **others** model, need only 1 item for opening*



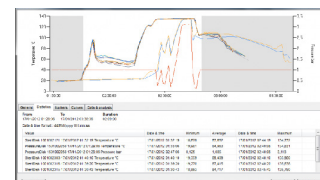
TS18SMWXLBK : Battery and O-ring can be used in all type of S-MicroW XL. if used below -30°C ,battery life will be highly reduced.



SPD Software (FREE) : It allows to start the devices setting the start delay, mission duration, notes. After download data are then displayed on graph, with zoom function, and table, exportable in Excel.



TS Manager Software : it allowed to do everything as a SPD software and has more functions such as multi-user, having login and password, Synchronized data table with statistics, etc. Downloadable from Tecno soft website and works with its hardware protection key only.



www.omi.co.th

Omega Measuring Instrument Co., Ltd.

Tel : 02-105-4676

Fax : 02-903-0080 ext. 6867

Email : info@omi.co.th

Line : @omith